

# SONOFF Smart Roller Shutter Switch (Neutral Wire Required)

---

## Product Preview Manual (VIP version)

Hi!

We are glad to have you participate in our latest product review! Your unique perspective and professional feedback are invaluable to us. In the sections that follow, you'll find comprehensive details on usage guidelines, platform compatibility, and the product manual. We hope this new product sparks excitement for both you and your audience. Thank you again for your support and collaboration!

Enjoy using the product!

---

## Product Model Introduction

We are thrilled to introduce our latest product—the Smart Roller Shutter Switch, designed to elevate your curtain control experience to a whole new level. Whether it's precise light adjustment, scheduled control, or seamless integration with your existing smart home system, this kit offers exceptional convenience and comfort.

- **Perfect Compatibility with Matter:** This curtain retrofit kit ensures compatibility with various platforms and devices, providing a cohesive home control experience.
  - **Precise Percentage Adjustment:** Control indoor lighting according to your needs, enhancing comfort and energy efficiency while adapting flexibly to different scenarios.
  - **Scheduled Curtain Operation:** Set specific times for curtain opening and closing based on your personal routines, enhancing convenience in daily life.
  - **Calibration of Curtain Operation Errors:** Reduce hardware inaccuracies and extend the lifespan of your smart curtains.
-

# Notes before Using

\*Please upgrade your eWeLink application to APP version V5.10.0 and above to support it.

\*Supported motor types: DUAL-RBS supports connecting load motors with a maximum current of 1A, and the motors can be either standard four-wire AC motors or five-wire AC motors (including ground, neutral, forward, and reverse wires).

---

## User Manual



## Introduction

This Smart Roller Shutter Switch is small in size, perfectly compatible with the European version of the recessed box , and supports a motor with a maximum current of 1A as a load. It supports WiFi remote control and Matter platform compatibility and integrates seamlessly with various smart home systems.

Connect the device to the switch and motor correctly to easily upgrade regular electric roller blinds to a smart system.



Remote Control



Percentage Control



Timer



Calibration Error



Voice control



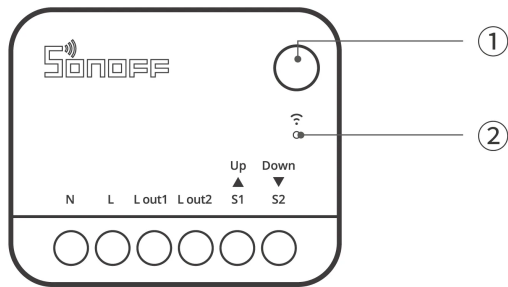
eWeLink Remote  
Control



Smart Scene



Multi-type Curtains



### ① Button

- Single click: Turn the device on or off.
- Long press for 5 seconds: Enter network pairing mode (pairing up to 10 minutes).
- Triple short press: Toggle the external switch type.

### ② LED Indicator (Blue)

- Solid On: Device is online.
- Single Flash: Device is offline.
- Double Flash: Local network status.
- Two Short Flashes Followed by One Long Flash: Device is in pairing mode.
- Breathing Mode (Long Press for 10 seconds): Successfully marks the "fully open" position of the curtain.
- Flash Three Times (Short Press Once in Breathing Mode): Successfully marks the "fully closed" position of the curtain.
- Flash Three Times (Triple Short Press): Successfully changed the switch type.

## Compatible Matter Ecosystem

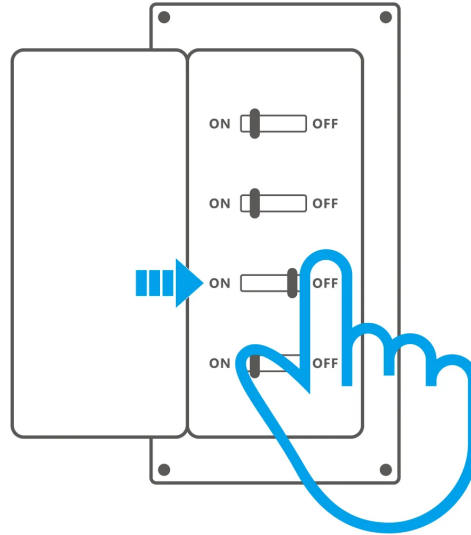


## Product Parameter List

Product Model	DUAL-RBS
MCU	ESP32
Rated Parameters	100-240V~ 50/60Hz 1A Max $\varepsilon$ (M)
Connection Method	Wi-Fi IEEE 802.11 b/g/n 2.4GHz
Product Net Weight	20.3g
Product Dimensions	39.5x33x16.8mm
Product Color	Green
Housing Material	PC
Place of Use	Indoor
Operating Temperature	10T40 (-10°C~40°C)
Operating Humidity	5%~95% RH, No Condensation
Operating Altitude	Below 2000 meters
Standards Implemented	GB/T 16915.2
Product Certification	CE/FCC/RoHS

## Installation

### 1. Power Off



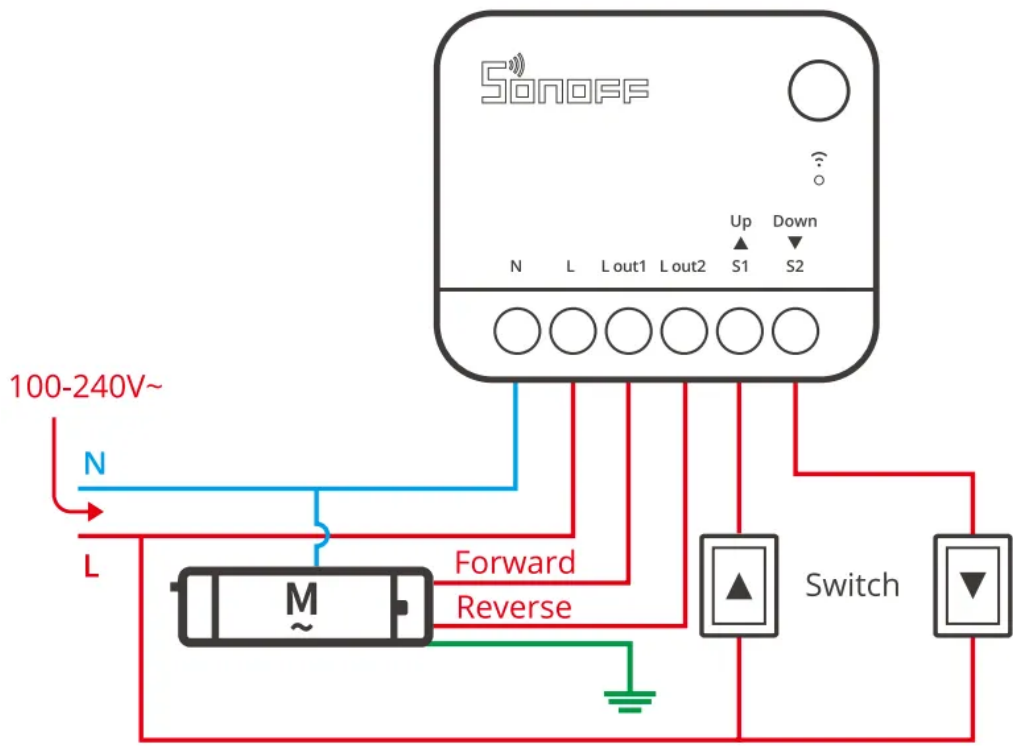
 **AWARNING**

Please install and maintain the device by a professional electrician. To avoid electric shock hazard, do not operate any connection or contact the terminal connector while the device is powered on!

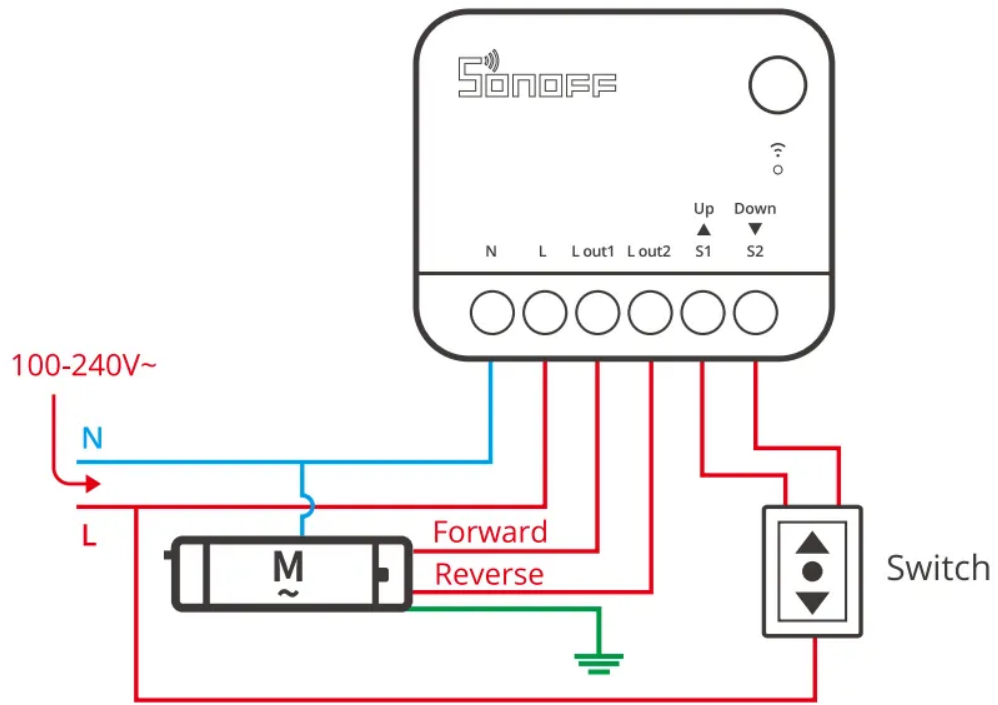
## 2. Wiring Instruction

In order to ensure the safety of the electrical installation, a miniature circuit breaker (MCB) or leakage protection Circuit breaker (RCBO) with a current rating of 1A in accordance with the national safety standard must be installed in front of the DUAL-RBS.

### **Momentary Switch Wiring:**



**Rocker Switch Wiring:**



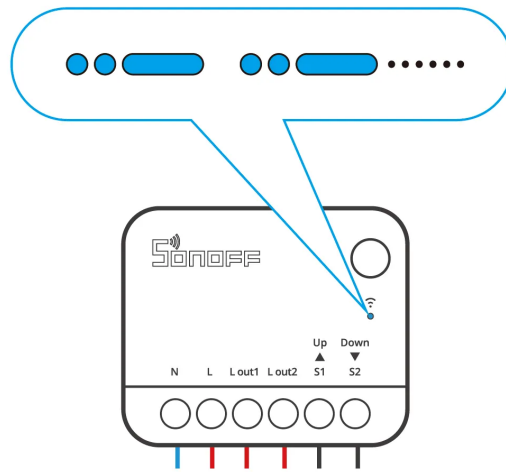
\* Make sure the line is connected correctly.

## Wiring Symbol Description

Terminal		Wires	
N	Neutral	N	Neutral wire
L	Live	L	Live wire (100~240V)
L out1	Live_Out Terminal1(100~240V)	Forward Line	Motor Forward Line
L out2	Live_Out Terminal2(100~240V)	Reversal Line	Motor Reversal Line
S1	Switch_1 (Control forward turn)		
S2	Switch_2 (Control reversal turn)		

### 3.Power On

After powering on, when the device is used for the first time, it enters pairing mode by default, and the signal indicator flashes "two short and one long".





\*If there is no distribution network within 10 minutes, the device will exit the distribution network mode. To re-enter, press and hold the device button for 5 seconds until the signal indicator light flashes two short and one long.

\*Due to the maximum allowed one-way operation time of the motor by the device being 5 minutes, in order to avoid motor damage, please pause the curtain operation in a timely manner before reaching the limit position.

## Check the Equipment Status

### 1. External Switch Type:

- ① The types of external switches support Momentary Switches and Rocker Switches. The factory default is Rocker Switch type (Edge Mode).
- ② Method for Switching Switch Types: Short press the button three times and the blue light flashes three times. At this point, the switch type is successfully switched.
- ③ Mode switching sequence (loop): Edge Mode → Pulse Mode → Following Mode.

### 2. Roller Shutter Direction Test

Press the external switch to check if the roller shutter moves in the correct direction. If it does not, power off the device, swap the Lout1 and Lout2 wires, and test again.

## Add Device

### Method 1: Matter Pairing

Open a Matter-compatible App to scan the Matter QR code on the Quick Guide or the device itself to add the device.



Matter mode pairing  
to Apple



Matter mode pairing  
to Google



Matter mode pairing  
to Alexa



Matter mode pairing  
to SmartThings

## Method2: eWeLink App Pairing

### 1.Download the eWeLink App

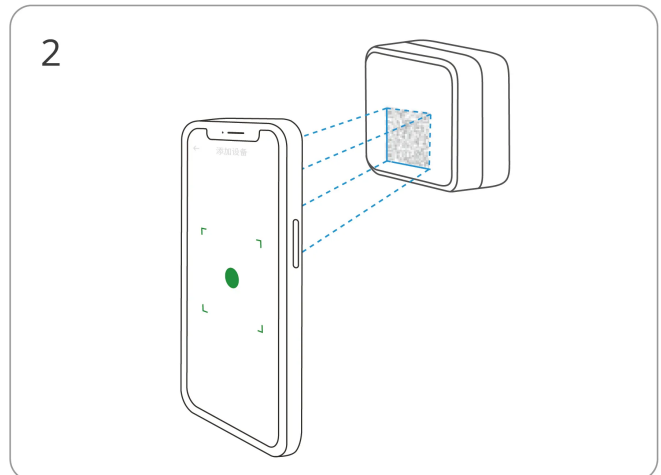
Please go to the **App Store**, **Google Play Store** or **Apple App Store** and search for "eWeLink" to download.



### 2.Scan QR code to add the device.



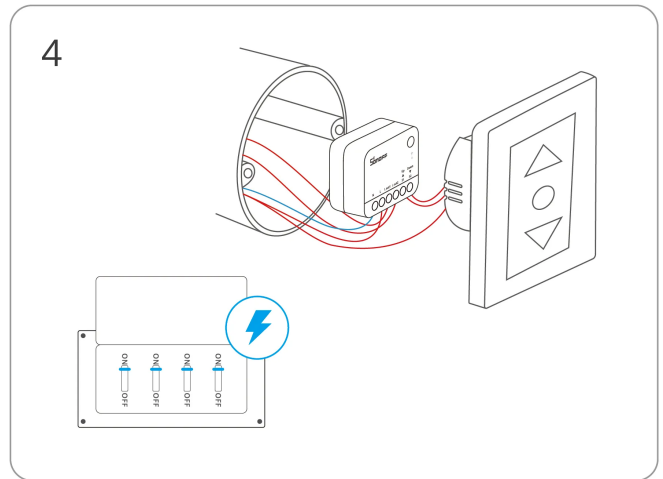
Enter "Scan"



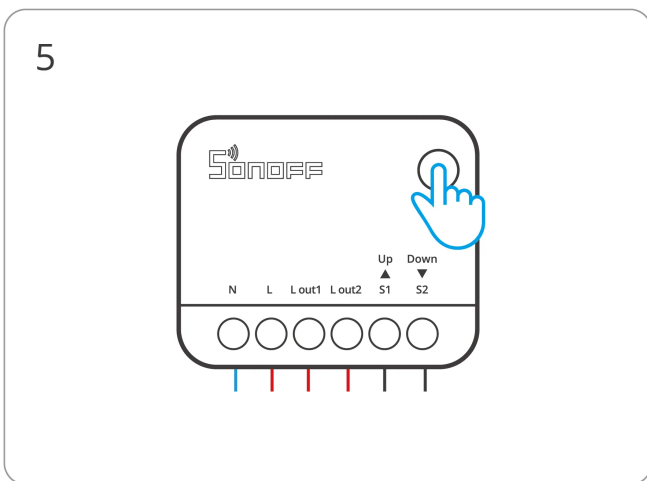
Scan the QR code on the device



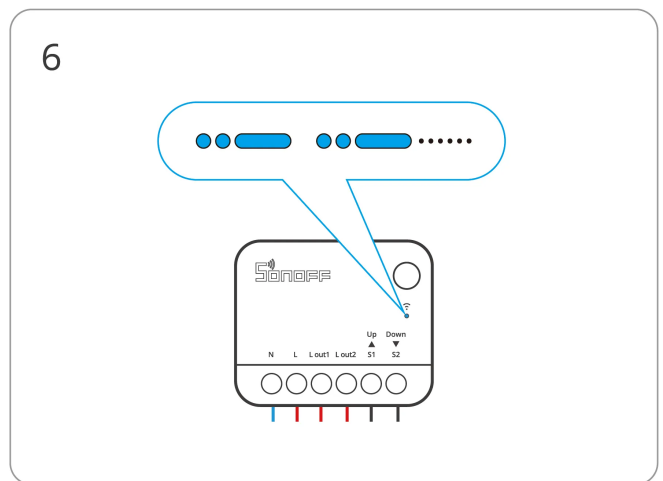
Select "Add Device"



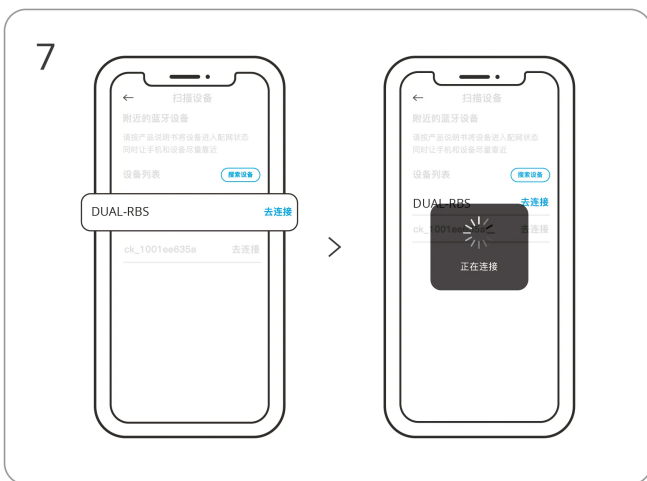
Power on the device



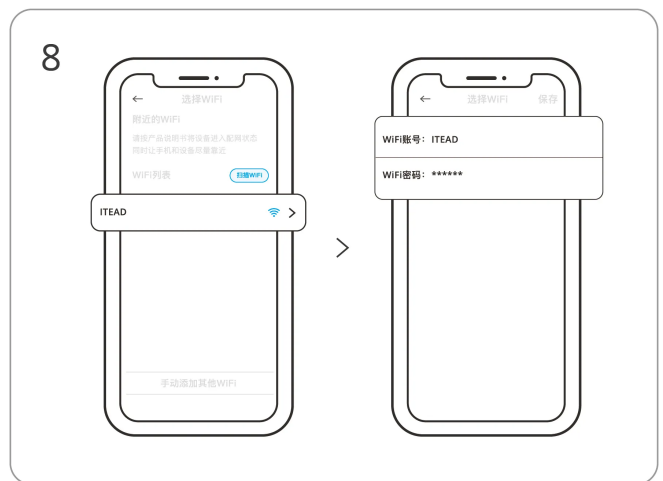
Long press the button for 5 seconds



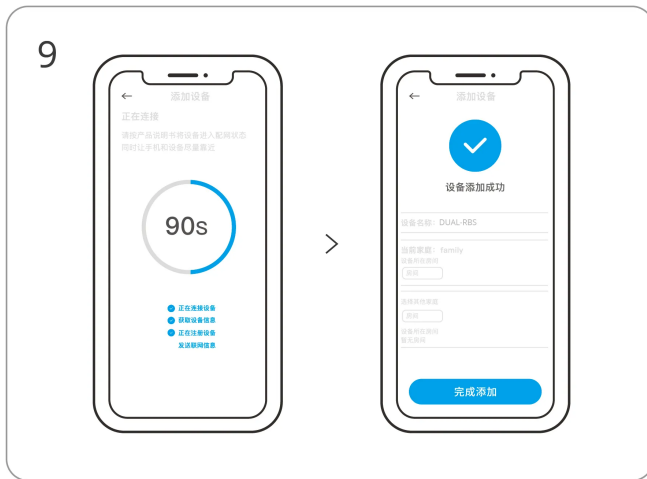
Check the blinking status of the LED indicator (two short and one long)



Search for devices and connect



Select the Wi-Fi network and enter your password



Device Addition Completed

## Travel Calibration

Using percentage control requires travel calibration, which can be performed using one of the following methods.

### Method 1: Manual Calibration

- ① Open the curtain to the fully open position, then press and hold the device button for more than 10 seconds. Then release the button when the LED indicator enters the breathing state.
- ② Close the curtain, and short-press the device button when the curtain moves to the fully closed position. The LED indicator flashes three times, and the travel calibration is completed.
- ③ Control the device via the App and check the fully open or fully closed positions. If there is any deviation, you can recalibrate.

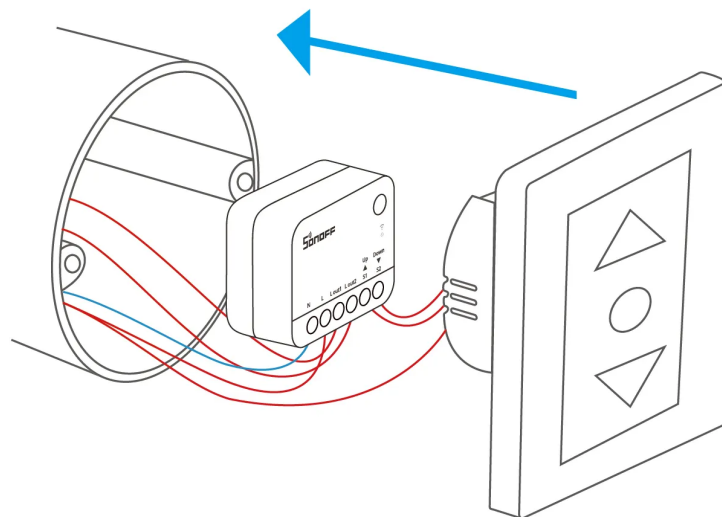
### Method 2: eWeLink App Travel Calibration

Users can perform "Travel Calibration" in the eWeLink App through the prompt pop-up or by opening the device settings page under "Initial Settings", and following the text instructions in the app for "Automatic Calibration" .

## Platforms and Capabilities

	eWeLink App	Apple Home	Google Home	Alexa	SmartThings
Local Manual Calibration	√	√	√	√	√
Percentage Control	√	√	√	√	√
Open/Close/Pause Button	√	×	×	×	√

## Install the Device in the Mounting Box



## Restore Factory Settings

By selecting "Delete Device" in the eWeLink App, the device will be restored to factory settings.

---

## Ending

We look forward to your review of this new product and believe your followers will be eager as well. Thanks you again for your participation and support!

If you have any questions or need further assistance, please feel free to contact us anytime.